



# TORKLIFT CENTRAL™

*Serving With Excellence Since 1976*

## ecoHITCH

-Designed Specifically For Your **Green Vehicle**

## Installation Instructions

### Application Fits

2009+ Mini Cooper S Convertible

2007+ Mini Cooper S Hardtop

2008+ John Cooper Works Edition

X7252

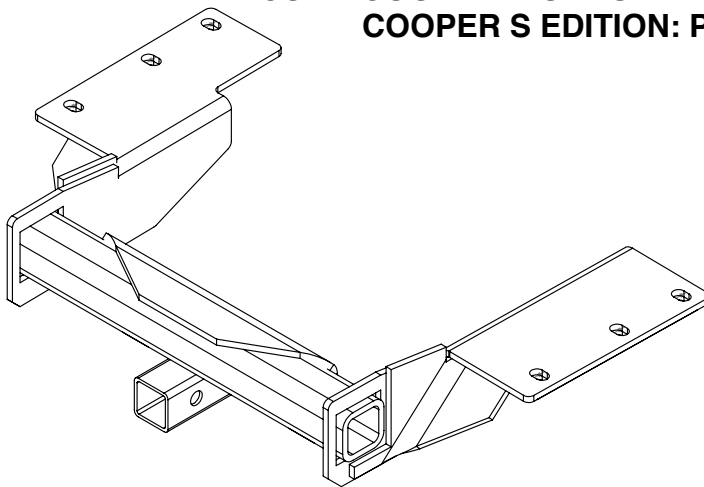
1.25" EcoHitch Hidden

2,000 lbs Weight Carrying/200 lbs. Tongue Weight

THERE ARE TWO VERSIONS INCLUDED FOR INSTALLATION.

**JOHN COOPER WORKS EDITION: Pg. 2**

**COOPER S EDITION: Pg. 8**



Torklift Central  
315 Central Ave N  
Kent, WA 98032  
253-854-1832

[www.torkliftcentral.com](http://www.torkliftcentral.com)  
[support@tlcentral.com](mailto:support@tlcentral.com)

### Stay Connected



torkliftcentral



torkliftcentral



tlcentral



torklift central



torklift central



Bolt Kit Weight:500g +/-

Hardware Included

QTY Fastener

- 2 3/8" Flat Washer
- 6 3/8" Inner Tooth Lock Washer
- 6 3/8"-16 Flange Hex Nut
- 6 3/8"-16 x 1-3/4" Bolt
- 4 3/8"D-3/4"x2" Plate Washer
- 2 3/8"D-1"x1" Oversized Plate Washer
- 1 3/8" Bolt Fisher

**NOTE: John Cooper Works Edition Will Include:**

- 2 Frame Plate Shim
- 2 Cross Strap Shim

## JOHN COOPER WORKS EDITION INSTRUCTIONS ONLY

**READ THESE INSTRUCTIONS THOROUGHLY AND ACCOUNT FOR ALL HARDWARE LISTED BEFORE BEGINNING INSTALLATION!**

**Step 1.** Raise vehicle on suitable jack stands, ramps, or hoist.

**Step 2.** Remove the (6) screws and cross strap shown in Figure [1] and set aside for reinstallation. Loosen the screws at the opposite ends of the support arms and swing outward away from the exhaust.

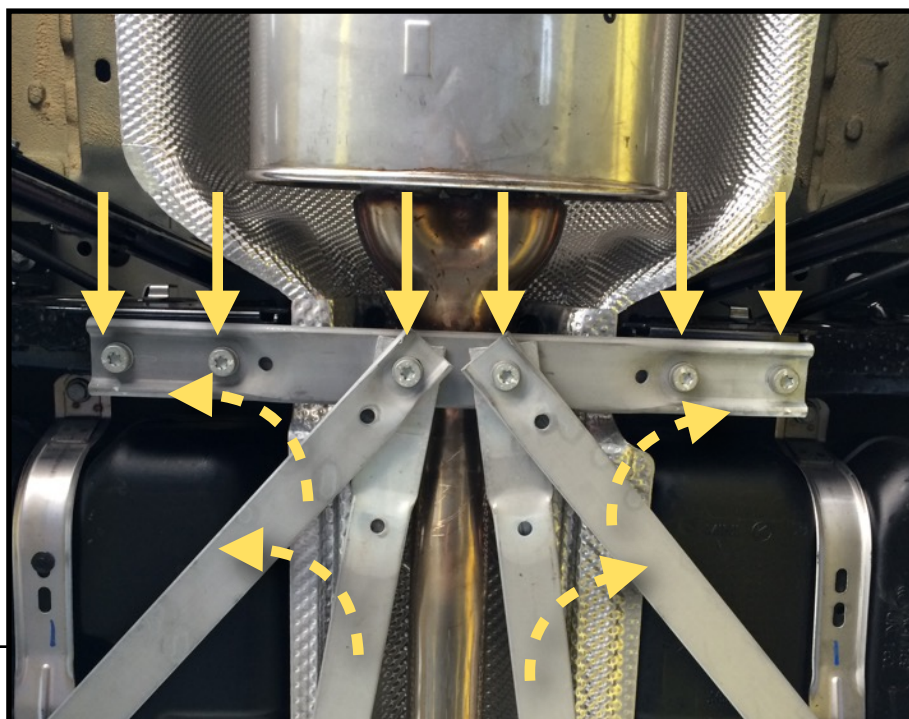


Fig. [1]

**Step 3.** Remove the (6) screws and stiffener plate shown in Figure [2] and set aside for reinstallation.

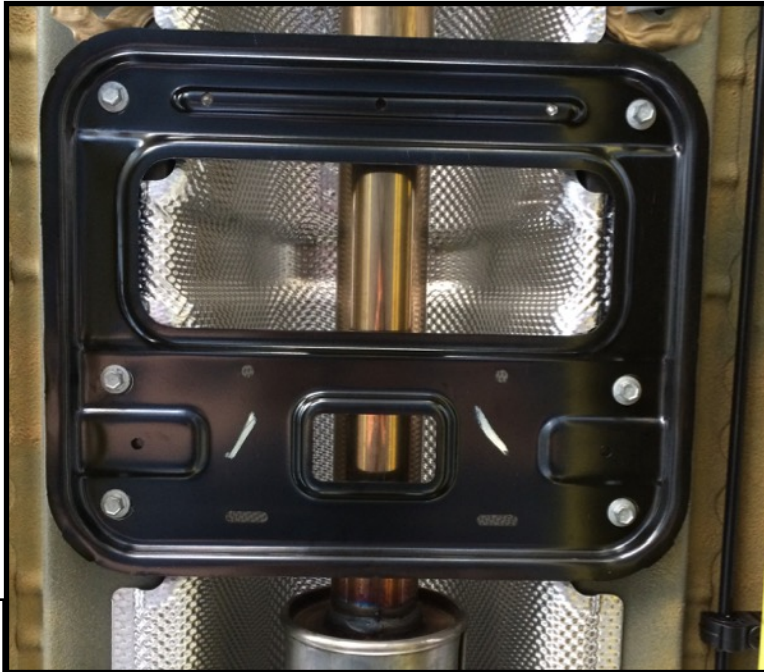


Fig. [2]

**Step 4.** Lower exhaust muffler by lubricating the rubber exhaust bungs with a lubricant such as WD-40 or equivalent. Repeat this process on the opposite side of the vehicle. Be sure to properly support the exhaust by placing a block of wood underneath the muffler to avoid damage.



Fig. [3]



Fig. [4]

**Step 5.** Remove the (2) bolts that hold the factory exhaust hanger to the frame of the vehicle and discard. Gently remove the factory exhaust hanger by pulling it out of the frame. Repeat on opposite side of vehicle.

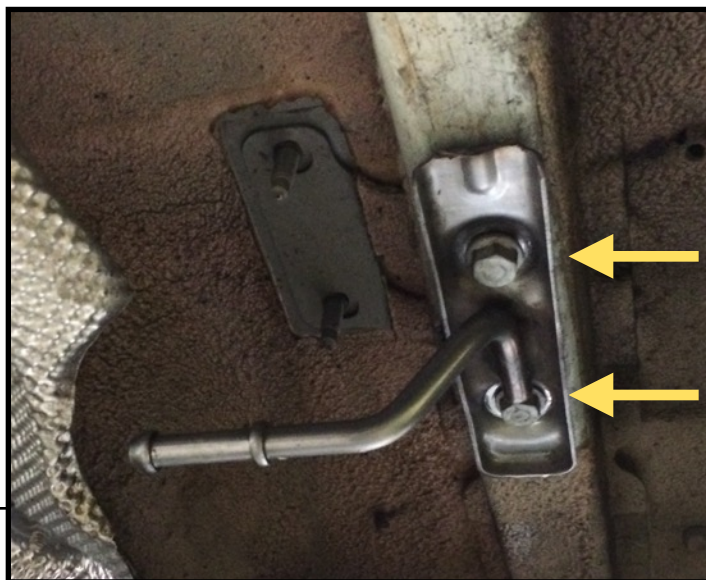


Fig. [5]

**Step 6.** Take factory exhaust hangers and trim the hanger on the location shown in Figure [6] below using a hacksaw or air saw. Repeat for both hangers.

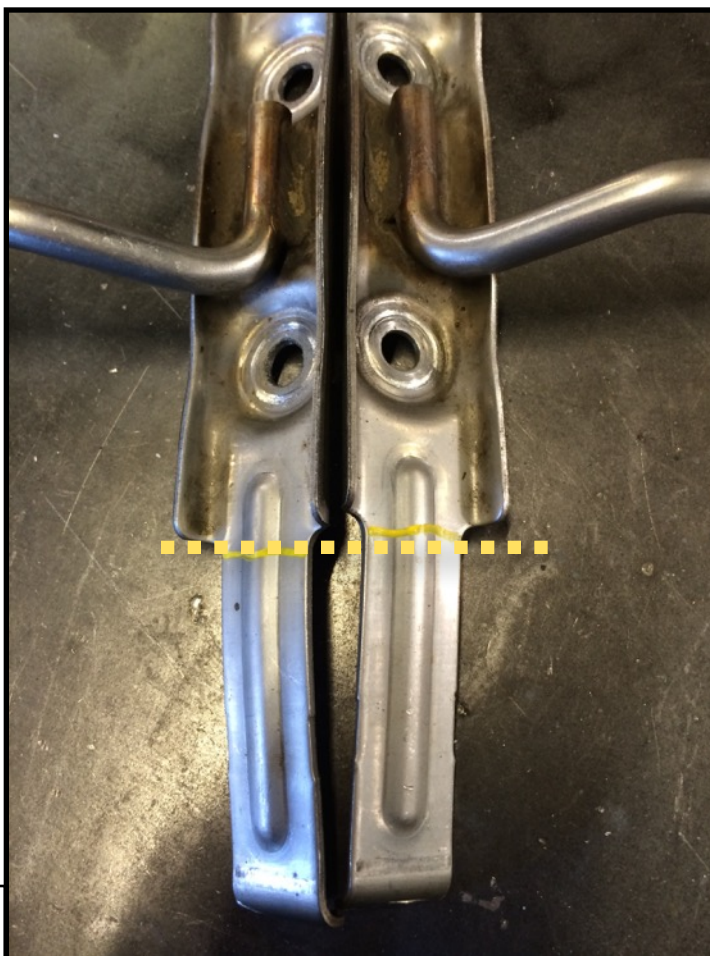


Fig. [6]

**Step 7.** On the driver side frame rail, feed the coil end of the bolt fisher through Hole A and out the end of the frame rail as seen in Figure [7]. Attach the 3/8" x 1-3/4" with a 3/8" star lock washer and 3/8" plate washer and fish through the frame rail. Repeat for Hole B. For Hole C, insert a 3/8" x 1-3/4" bolt with a 3/8" star lock washer and 3/8" oversized plate washer. Repeat step on passenger side. See Figure [8].

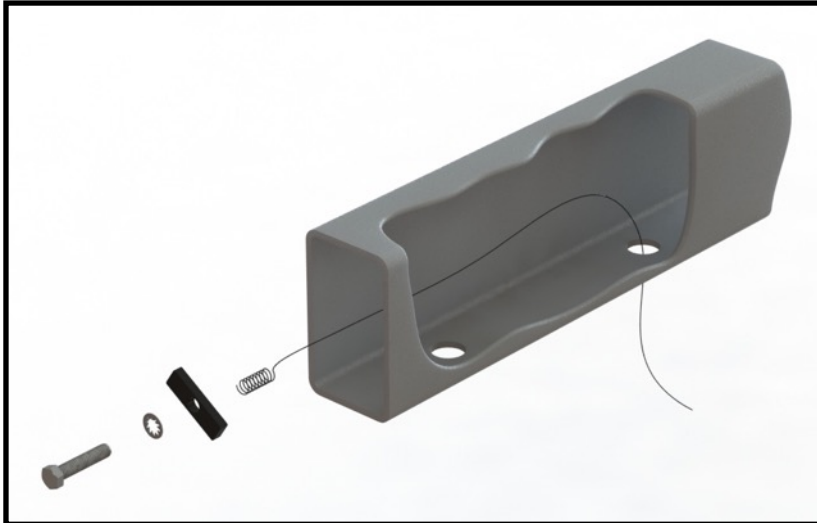


Fig. [7]

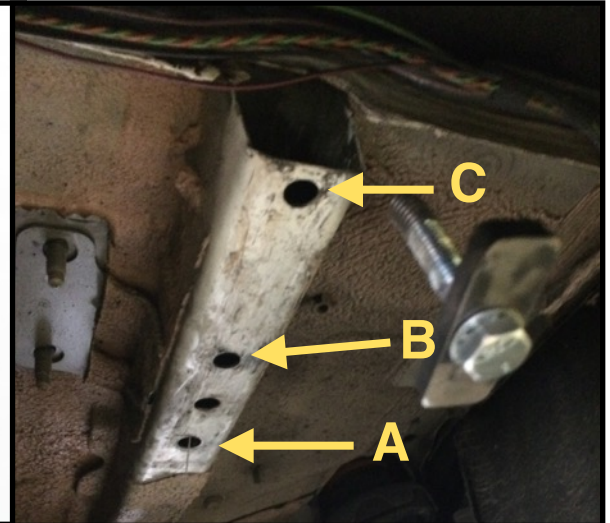


Fig. [8]

**Step 8.** Gently bend the heat shield above the center of the exhaust to make way for the hitch to be installed. See Figure [9]. After the hitch is installed, you may bend the heat shield back if you choose.

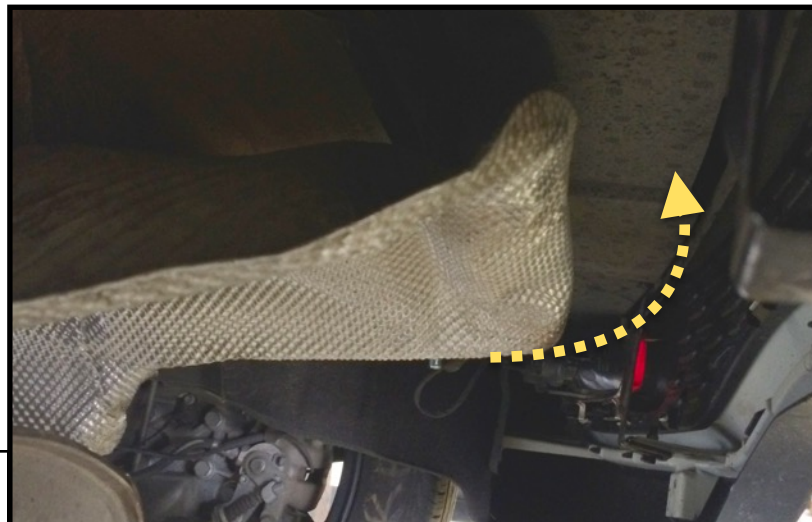


Fig. [9]

**Step 9.** Place the Frame Rail Shims onto the fished bolts. Maneuver the hitch into position as seen in Figure [10] and then raise the hitch into position onto bolts. Be careful not to push the bolts back into the frame rails. Finally, replace the cut exhaust hangers and secure the assembly with 3/8" flat washer and 3/8" serrated flange nuts on all bolts. Make sure the receiver is centered and then torque all hardware to 30 ft-lbs.

**NOTE:** For ease of installation, secure shims to hitch using a silicone or equivalent adhesive before maneuvering into position.



Fig. [10]



Fig. [11]

**Step 10.** Once hitch has been secured, reattach exhaust bungs to hangers. For ease of reinstallation, apply WD-40 or equivalent.

**Step 11.** Reinstall stiffener plate from Step 3.

**Step 12.** Reinstall cross strap from Step 2 with provided cross strap shims using the factory fasteners. Swing support arms back into original position and reattach to cross strap with factory fasteners.

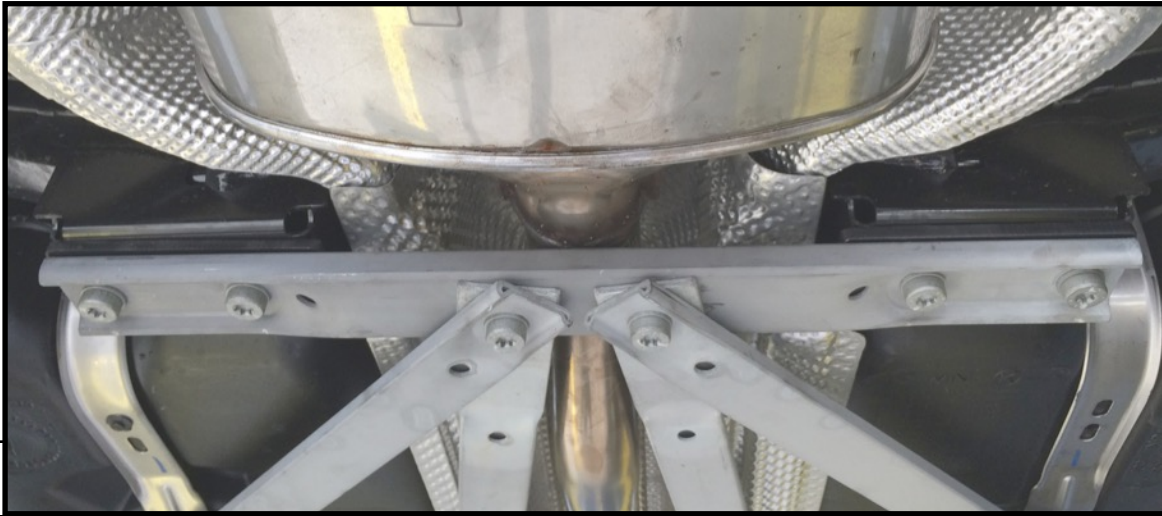


Fig. [12]

**Congratulations on the completed installation of the Mini John Cooper Works Edition Stealth EcoHitch! It is designed with a lifetime warranty for a lifetime of enjoyment. If you have any questions or suggestions please contact our tech support at [support@tlcentral.com](mailto:support@tlcentral.com) or by phone at (253)-854-1832.**



## COOPER S EDITION INSTRUCTIONS ONLY

**READ THESE INSTRUCTIONS THOROUGHLY AND ACCOUNT FOR ALL HARDWARE LISTED BEFORE BEGINNING INSTALLATION!**

**Step 1.** Raise vehicle on suitable jack stands, ramps, or hoist.

**Step 2.** Lower exhaust muffler by lubricating the rubber exhaust bungs with a lubricant such as WD-40 or equivalent. Repeat this process on the opposite side of the vehicle. Be sure to properly support the exhaust by placing a block of wood underneath the muffler to avoid damage.

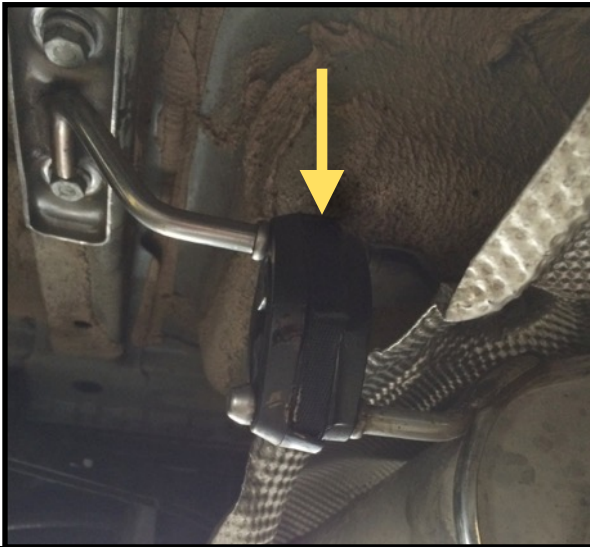


Fig. [2]

**Step 3.** Remove the (2) bolts that hold the factory exhaust hanger to the frame of the vehicle and discard. Gently remove the factory exhaust hanger by pulling it out of the frame. Repeat on opposite side of vehicle.

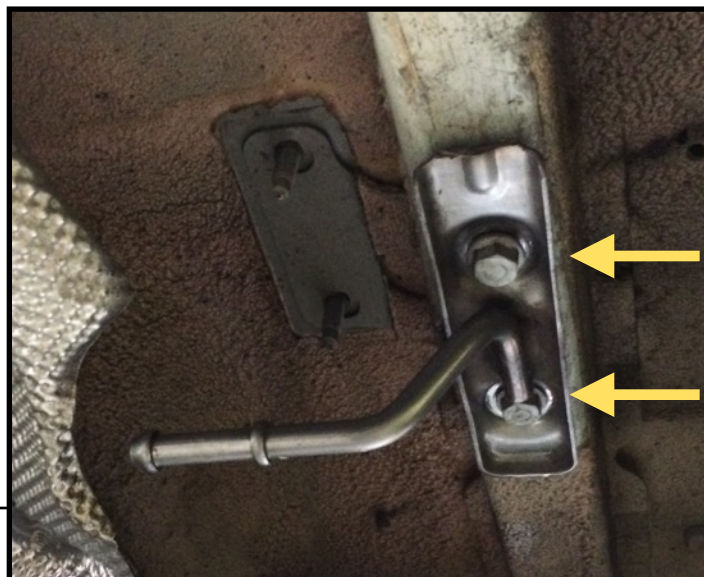


Fig. [3]



**Step 4.** Take factory exhaust hangers and trim the hanger on the location shown in Figure [4] below using a hacksaw or air saw. Repeat for both hangers.



Fig. [4]

**Step 5.** On the driver side frame rail, feed the coil end of the bolt fisher through Hole A and out the end of the frame rail as seen in Figure [5]. Attach the 3/8" x 1-3/4" with a 3/8" star lock washer and 3/8" plate washer and fish through the frame rail. Repeat for Hole B. For Hole C, insert a 3/8" x 1-3/4" bolt with a 3/8" star lock washer and 3/8" oversized plate washer. Repeat step on passenger side. See Figure [6].

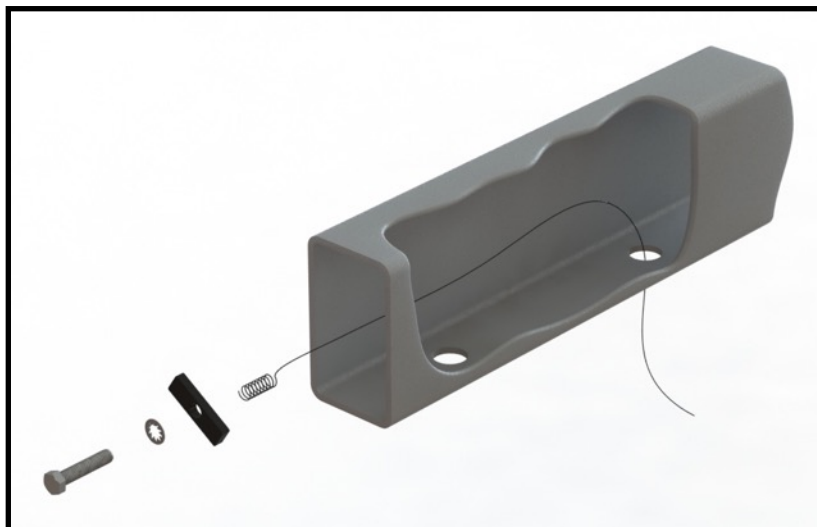


Fig. [5]

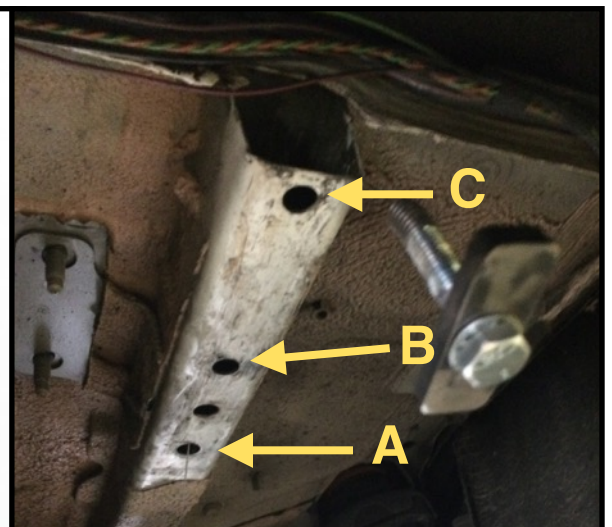


Fig. [6]

**Step 6.** Gently bend the heat shield above the center of the exhaust to make way for the hitch to be installed. See Figure [7]. After the hitch is installed, you may bend the heat shield back if you choose.

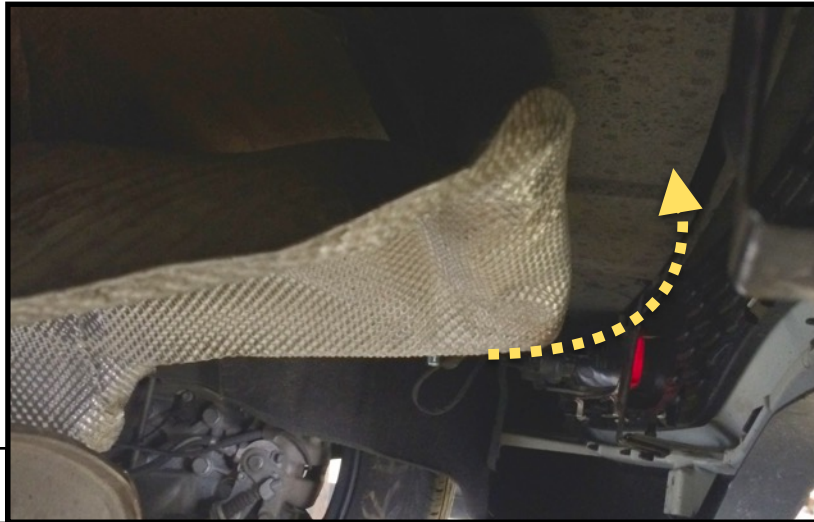


Fig. [7]

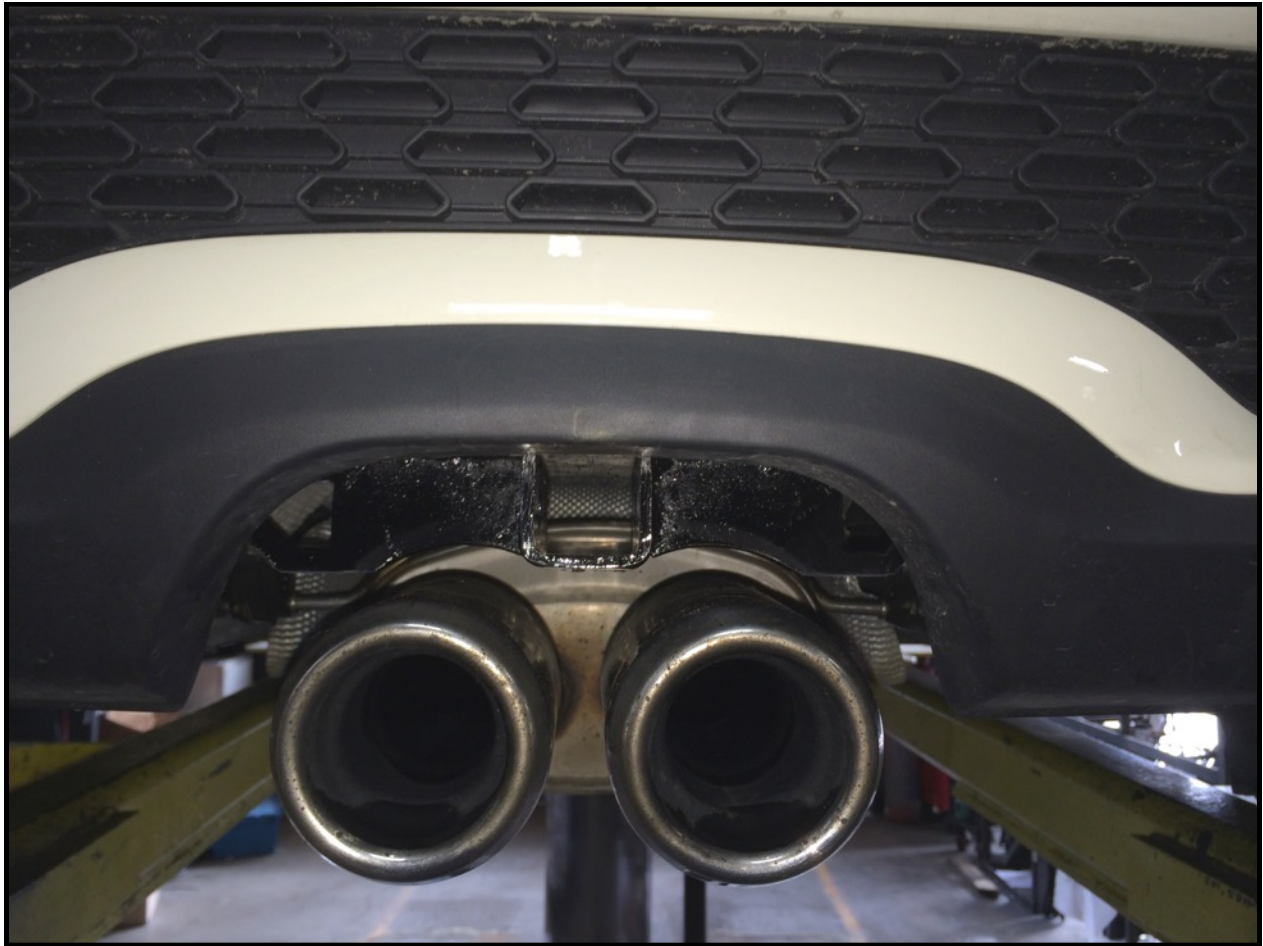
**Step 7.** Maneuver the hitch into position as seen in Figure [8] and then raise the hitch into position onto bolts. Be careful not to push the bolts back into the frame rails. Finally, replace the cut exhaust hangers and secure the assembly with a 3/8" flat washer and 3/8" serrated flange nuts on all bolts. Make sure the receiver is centered and then torque all hardware to 30 ft-lbs.



Fig. [8]

**Step 8.** Once hitch has been secured, reattach exhaust bungs to hangers. For ease of reinstallation, apply WD-40 or equivalent.

**Congratulations on the completed installation of the Mini Cooper S Stealth EcoHitch! It is designed with a lifetime warranty for a lifetime of enjoyment. If you have any questions or suggestions please contact our tech support at [support@tlcentral.com](mailto:support@tlcentral.com) or by phone at (253)-854-1832.**



# WARRANTY/DISCLAIMER INFORMATION

Torklift Central requires proof of purchase for warranty claim registration, with pictures of any defective product before issuing a replacement. Torklift will not accept claims on any product without proof of purchase, which can be faxed, scanned, emailed or mailed to the information provided below. Torklift Central warrants its hitches, custom hitch receivers and accessories (excluding electrical wire harnesses which carry a warranty from their specified manufacturer) from date of purchase against defects in material and workmanship under normal use and service for the ownership life of the original consumer purchaser. Torklift Central will replace free of charge any part that proves defective in material or workmanship when presented to Torklift Central, transportation charges prepaid by purchaser, at the address below. **This warranty is limited to defective parts replacement only. Labor charges and/or damage incurred in installation or replacement, as well as incidental and consequential damages connected therewith are excluded.** This warranty does not include normal wear and tear or the finish and paint. Rusting, cracking or peeling of the finish is also excluded. Some states do not allow the exclusion or limitation of incidental or consequential damages, so the above limitation or exclusion may not apply to you. Any damage to Torklift Central products as a result of misuse, abuse, neglect, accident, improper installation or any use violative of instructions furnished by Torklift Central will void the warranty. This warranty gives you specific legal rights and you may also have rights, which vary from state to state. With warranty service, you may be able to go to a small claims court, a state court or a federal district court.

Although Torklift Central trailer hitches are both tested and rated for towing within the specific capacity label found on each trailer hitch. Torklift Central assumes no liability for vehicle manufacturers warranty due to the use of a Torklift Central trailer hitch being used for towing behind any vehicle or using the trailer hitch in a manner that it was not designed for. Although this specific trailer hitch has a load rating, which includes trailer tongue weight, and a trailer weight carrying capacity, Torklift Central is not responsible for the voiding of any warranty on any vehicle due to factory towing limitations. All vehicle warranties are the sole property and responsibility of the owner of the vehicle that the Torklift Central trailer hitch is installed upon. Torklift Central does not endorse towing behind any vehicle if the vehicles manufacturer states that towing is not recommended. Check your vehicle's owner's manual for the proper tow rating of your vehicle.

**ADDRESS:** 315 Central Ave N. Kent, WA 98032

**\*WARNING\*** Your vehicle may have a lower tow rating than this trailer hitch. If your vehicle's tow rating is less than the rated towing capacity on your Torklift Central trailer hitch, your trailer hitch capacity is limited to your vehicle's factory rated towing capacity.

**FOR EXAMPLE:** the label on your Torklift Central trailer hitch states it's capacity is rated for 500 pounds tongue weight and 5,000 pounds towing weight. However your vehicle's factory rated towing capacity is limited to only 350 pounds tongue weight and 3,500 pounds towing weight. In this example your maximum towing capacity of your Torklift Central trailer hitch is limited to 350 pounds tongue weight and 3,500 pounds towing weight as stated by your vehicle's maximum factory tow rating.

**\*DANGER\*** Never exceed your vehicle's manufacturer's recommended towing capacity which may be a lower rating than this trailer hitch

Unsure of your tow rating? Download our towing app from the app store to find your vehicles tow rating.  
[www.torkliftcentral.com/app.php](http://www.torkliftcentral.com/app.php)